

UM Amador Collection

Nathan Craig Emma Alvarez de La Rosa
Jonathan Gilbreath

2024-02-07

Chapter 1

University Museum Amador Collection

Research Page: Work in Progress

This is a research website that documents notes related to the rehabilitation of the Amador Collection at the University Museum. The information presented here is a fragmentary and incomplete work in progress (Figure 1.1).



Figure 1.1: Photograph of the Amador house from Camien (1962).

Chapter 2

History & Research

This document presents a very brief history of the Amador Collection at the UM. The discussion focuses on more recent history including the NMSU RAS Seed Grant FY23.

The University Museum (UM) was founded in 1959, and “started collecting artifacts before there was ever a building into which they could be placed” (Baker 1997, 7). By 1960, the UM gained both its first significant collection¹ and two storage facilities: the Old Bus Garage and Old Carpenter Space. By 1962, the UM moved to the Seed House.

2.1 Initial Receipt of Objects by UM in 1962

In 1962, the UM accepted a sizable number of items from the Amador House, *La Casa del Jardín* (Camien 1962); this is accession 1962.08 (Section 3.1). Over the ensuing years since 1962, the UM changed locations at least three times before arriving at Kent Hall (KH) in 1981 (Baker 1997),² and the museum’s numbering system changed radically at least twice. Over time, through these and other processes, many Amador objects became disassociated with their documentation. Part of the current research by the museum is to re-identify Amador related items and reassign them to the collection.

¹This is the Murdock collection.

²Prior to occupying KH, the university museum and collections were housed in the 1) old bus garage and old carpenter space, 2) old airport hangar, and 3) seed house.

2.2 Inventories between 1962-1999

From ongoing review of museum documents, it appears that between 1962-1999 there were multiple attempts to conduct comprehensive inventories of the UM collections. From paper records, it looks as though a major inventory was undertaken in 1979. Though difficult to reconstruct, this inventory may have been initiated in anticipation of the move to KH which occurred in 1981 (Baker 1997, 17).

By the early 1970's, it appears that some items recovered from the Amador House and accessioned by the UM had already become disassociated with their original accession records. In 1974 some of the items initially accessioned as 1962.08 were reaccessioned as found-in-collections (FIC) (i.e. 1974.01). This implies that the objects were disassociated with their paper records, and the individual(s) performing the inventory, did not or could not, reconstruct the connection. Therefore, a new tracking number was used, and the object designated as FIC.

i Note 1: Found-In-Collections (FIC): Definition and Procedures

FIC definition “Undocumented objects are mysteries that can sometimes be solved so that the undocumented object is restored to its correct status, but if the mystery cannot be solved, the object should properly be considered a found-in-collection (FIC) object” (Buck 2020, 29.3).

FIC Procedures “If original documentation is found for an object that has been tracked or accessioned into the collection using a FIC number, the object should be returned to its original number and the FIC number retired” (Buck 2020, 29.35).

Following Museum Registration Manual recommendations, as part of ongoing collection rehabilitation efforts, where possible objects logged as FIC are returned to their original accession number and the FIC number is retired (Note 1, Figure 2.1).

2.3 UM Curates “Everyday Life at ‘El Jardin’ ” 1999

2.4 UM Undertakes a Systematic Inventory 2021-2022

In 2021, under the initiative of former UM Curator Dr. Kristin Otto, the UM began the multi-year process of systematically inventorying the museum's entire permanent collection. This effort was supported by Institute of Museum and Li-

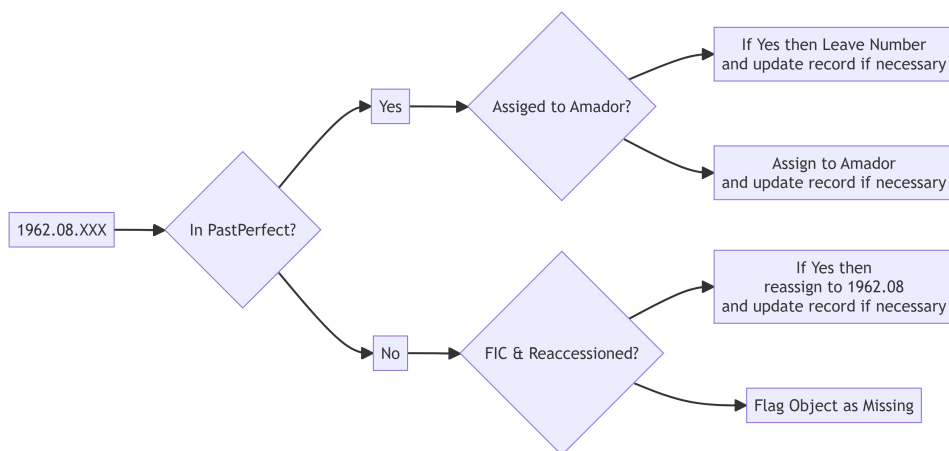


Figure 2.1: General Plan of Action for treatment of records during F23/S24 collection rehabilitation efforts directed by Craig.

brary Services (IMLS) *Inspire!* Grants for Small Museums Award IGSM-248937-OMS-21 to Dr. Otto. This grant funded a systematic inventory of ethnographic and historic objects housed in KH. At the completion of the process (Johnston 2023), 4415 objects were registered and made available on a [searchable user interface](#).

Though the criteria of what constitutes the Amador collection was never formally defined during the historic and ethnographic inventory of 2021-2022, 68 objects were logged as belonging to the “Amador Collection” ($n=59$) “Amador-Selso Collection” ($n=8$), or “Amador” ($n=1$). Two additional objects were identified as having been donated by “Hendrick Amador Tucker” are part of the “Pottery of the Americas” collection, but are not included in any of the three aforementioned collections. Paper records at the UM suggest that there were many more items in the Amador collection than what was captured by the inventory efforts conducted under IGSM-248937-OMS-21. In correspondence on file at the UM Reynolds (2020) estimated that there were about 600 items in the Amador Collection but that the collection is complex and that it would be difficult to relocate all of the items. As an example of this complexity, even during recent times, during the 2021-2022 IMLS funded inventory, accession 1973.03 was flagged as FIC. However, review of museum records performed under the NMSU Research Administration Service (RAS) seed grant of F23/S24 (Section 2.6), quickly revealed that accession 1973.03 is composed of objects recovered from the basement of the Amador House and was a transfer of objects from the NMSU Archive to the UM (Section 3.6). During S23, UM student staff reassigned accession 1973.03 to the Amador Collection (Figure 2.1).

In 1999, UM Curator Terry Reynolds Figure 2.2 curated an exhibition entitled “Everyday Life at ‘El Jardín’” Outgoing loan documentation for the exhibition indicates that 48 objects were to be displayed at the Old Amador Hotel which in 1999 was serving as the Doña Ana County Manger’s Complex. According to Reynolds correspondence found in museum records, the exhibited objects were recovered from the basement of the Amador House and “they represent everyday life at El Jardín.” Among the everyday objects displayed in the exhibition were a coal heated iron and a washboard.



Figure 2.2: Dr. Terry Reynolds lectures on the Amador family at the Amador Hotel on April 15, 2016. Image captured from [Las Cruces Sun News](#).

2.5 UM Collection Description 2020-2023

The following text was copied from the University Museum’s website page on the Amador Collection in 2023. The text was posted to the UM website by Dr. Otto and is reproduced here for archival purposes.

i Click to show website text

The Amador family was one of the most prominent Spanish families to have first settled Las Cruces around the late 1850s, as well as being one of the best historically documented. The University Museum acquired 600 items from the Amador family home before it was razed in 1962. The Amador collection contains clothing and textiles, children’s toys and dolls, housewares, and miscellaneous items such as fans. The decedents of the Amador family still continue to donate cherished heirlooms to the museum; therefore, we have been able to preserve a fair amount of history and memories pertaining to the Amador family, one that reflects the origins of the city of Las Cruces.

Many of Martín Amador’s accomplishments secured the future existence of Las Cruces, such as owning a mercantile in Silver City and Las Cruces, several farms in Mesilla Valley, served on several civic commissions and committees, donated money to start the first public school system in Las Cruces, and if that wasn’t enough, Martín donated a considerable amount

of land that would then bring the railroad system to Las Cruces in 1881. The Amador House, which was completed in 1879 then demolished in 1962, was known as *La Casa del Jardín* for the elegant garden that was established there for his wife, Refugio Ruiz. Martín and Refugio both passed in the early 1900s, but their two youngest daughters of five that lived to adulthood, inherited the home. Clotilde and her husband were the last to live in the Amador house, until Clotilde passed in 1960.

In a 2006 article in *La Herencia* written by one of the University Museum's prior curators who has been dedicated to researching the histories of El Paso del Norte, Mesilla Valley, and particularly the Amador family, Dr. Terry R. Reynolds writes, "Rather than storing fruits and vegetables in ground floor rooms, Clotilde had collected photographs, newspapers, catalogs, magazines, and various bits and pieces of household goods and furnishings. This material was unsuitable for auction, and her descendants gave the New Mexico State University Library permission to search among these rooms for items of historical value. Two truckloads of paper and objects were taken to the university, where all the objects of historical significance were catalogued and stored by the NMSU Museum."

Our collection at the NMSU Museum combined with the NMSU Archive and Special Collections located in Breland Library together form the best documented 19th century Hispanic Family history available. The Amador Hotel and Foundation still stands.

2.6 Amador Collection Research Administration Services (RAS) Seed Grant 2023-2024

In 2023, with support from NMSU's Research Administration Services (RAS) the UM initiated a focused Seed Grant project to rehabilitate the Amador Collection. To the best of Craig's knowledge, criteria that define the Amador collection were never formally defined. As an initial step of Amador Collection rehabilitation Craig felt it necessary to explicitly define the Amador Collection (Note 2) and did so based on the object originating from an Amador property or having been donated by a close relative of the Amador family.

i Note 2: Collection Definition

As of 2024, the UM Amador Collection is defined as:

- objects recovered from an Amador property or
- items owned by a direct consanguineal or affinal descendant of Martín Amador or Refugio Amador de Ruíz (Figure 2.3).

During the Fall 2023 Semester, graduate student Jonathan Gilbreath reviewed various paper records related to the Amador collection and attempted to cross

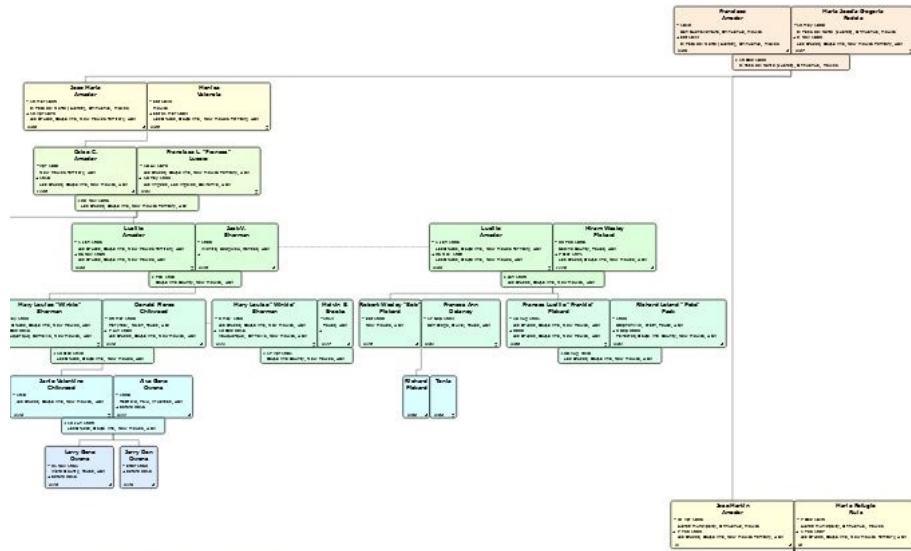
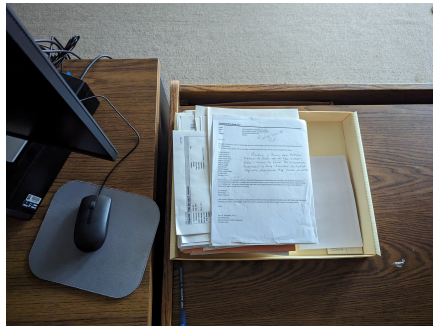


Figure 2.3: Genealogical diagram illustrating descendants of Martín Amador and Refugio Amador de Ruíz. Data were compiled into GEDCOM format by Jonathan Gilbreath, Fall 2023.

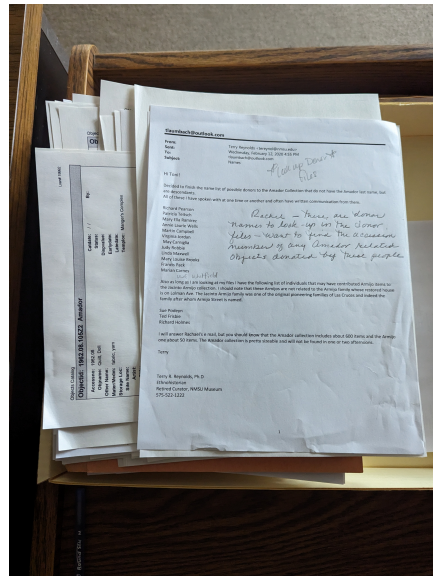
check records to attain an accurate assessment of the collection (Figure 2.4). Note that Figure 2.4b shows a 2020 email from former curator Terry Reynolds to Toni Laumbach (former Chief Curator at the [New Mexico Farm & Ranch Heritage Museum](#)), and there is a hand written note to “Rachel”. Rachel Cover was Interim Curator of the UM from 2019-2020. It is Craig’s understanding that these documents (Figure 2.4) were piled up in KH 210 since at least 2020. During Spring 2024, undergraduate student Emma Alvarez de La Rosa embarked on the process of defining the key accessions involved and updating object records to better reflect Amador Collection holdings at the UM. A great deal of this collection rehabilitation work involved searching through UM collections areas (primarily the Basement and Textile Room) to track down objects because most items were lacking location information—even those entered into PastPerfect. During Spring 2024, Gilbreath supported the Amador inventory work by scanning early accession binders (Section 2.6.3). As students processed portions of the collection, paper records (i.e. Figure 2.4) were properly refiled. All work was supervised by Craig.

2.6.1 Basic Research Questions for RAS 2024 Seed Grant

The primary purpose of the RAS 2024 Seed Grant was to rehabilitate the Amador collection. This work involved a set of simple and fundamental questions about the Amador Collection:



(a) Tranche of documents related to the Amador Collection.



(b) Detail of tranche of documents related to the Amador Collection

Figure 2.4: Tranche of documents related to the Amador Collection that were found in KH 210. Click the image to view it full size, right click to open it in a new window.

- What does the UM have, and where are the objects located?
- How did those objects come into the museum?
- What object documentation exists at the museum?

Additional ancillary lines of investigation regarding the Amador collection includes but is not limited to identifying prior research done on the family, the properties, and the objects in the collection (Chapter 4).

2.6.2 Spring 24 Student Plan Of Action

The following outline serves as a general plan of action for students working on the project during the Spring 2024 semester.

1. Learn about the Amador family by reading select texts and visiting “[The Amadors: Family, Culture, and Identity in Early Las Cruces](#)” exhibition at the Branigan Cultural Center from 2023-10-20 through 2024-01-13.
2. Develop an understanding of the current project by cultivating knowledge regarding the history of the family in relation to the University Museum as well as the work of past Directors (i.e. Camien) and Curators (i.e. Reynolds).
3. Start inventory work by identifying the major accessions involved in the

Amador collection.

- a. Do this by reviewing object numbers to look for the most common accessions. Gilbreath's Excel sheet is based on the papers stacked on the Registrar's desk (Figure 2.4; and Figure 2.5). He cross checked these records against information from the binders and folders in KH 210 as well as the museum's database PastPerfect.
 - b. Make note if the objects meet the criteria for inclusion in the Amador Collection related accessions. This means they came from an Amador property or a member of the Amador family (Note 2).
 - c. If it is an Amador Collection accession, then review that accession's paper records: binders and folders located in the North-East corner of KH 210 (Figure 2.5).
 - d. Look for conflicting numbers and note them if encountered.
4. Document in PastPerfect what can be gleaned about the accession through a review of paper records.
 5. When appropriate assign the objects to the Amador collection.
 6. Ensure that digital object records are properly formed and that all available information is filled into the appropriate fields.
 7. Ensure all collection objects are photographed and the photograph is loaded into PastPerfect.

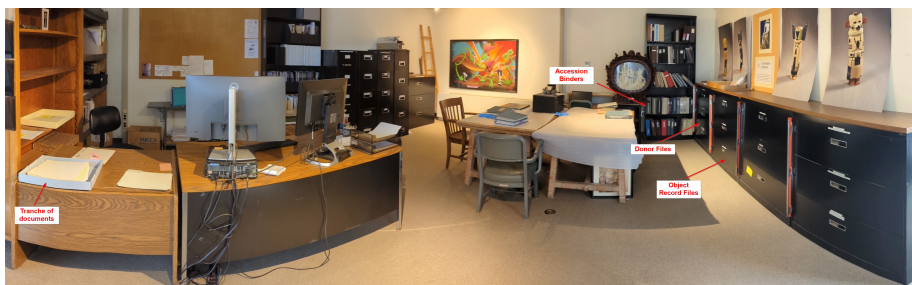


Figure 2.5: KH 210 showing museum records related to the Amador Collection. Click the image to view full size, right click to open in new window.

2.6.3 Accession Binder Document Scanning

Jonathan Gilbreath noticed that in consulting older paper records, records were beginning to show wear and tear. Older records in particular were suffering. To scan these records Craig obtained a CZUR ET24 Pro document scanner and Gilbreath undertook scanning of all object accession binders (Figure 2.6). This work is about half complete and ongoing.

Gilbreath scans the binder using the Czur Scanner software with the following scanner settings:

- Frequency: 60Hz
- Resolution: default 24,000,000 (569x4272)

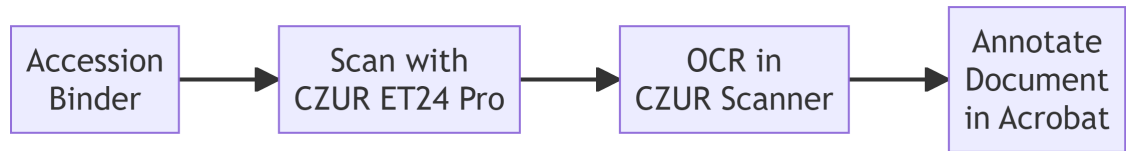


Figure 2.6: Flowchart illustrating the accession binder scanning process.

- DPI: 1000
- Image format: JPG
- Image quality: best
- Paging settings : automatically create separate pages; left to right, left page comes first
- Black and white: standard

Initially the scanned files were exported to PDF directly in the Czur Scanner software using default settings. However, it was apparent that “under the hood” compression was rendering hand written text illegible. This is a significant problem because while most records are typed, many are hand written and even those that are typed often contain hand written annotations which are important to retain in the digital copy. Setting the Image processing mode to **Keep original image** largely solved this issue. Craig and Gilbreath experimented with OCR settings and use the following parameters when exporting to PDF:

- Language: English
- Export file type: PDF
- Image processing mode: Keep original image
- PDF quality: Medium resolution (this did not seem to degrade the image quality)

Once the PDF is created in the Czur Scanner software, it is then opened in Adobe Acrobat where annotations are applied to the pages as necessary.

Annotations are added as comments or text boxes (Figure 2.7). To create the annotation, activate the comment tools, select the add text comment tool, then put the cursor where desired, then click and type the annotation. **Courier** is used as the font because it is the closest to the original typeface in the documents. Text is assigned RGB Color code= 140,11,66 which is part of NMSU’s [official color palette](#).

In terms of OCR, we got better results from the CZUR Scanner software than Adobe Acrobat. This came as a surprise to Craig. CZUR Scanner uses ABBYY® OCR which seems to do an exceptional job on these older documents. However, handwriting is not recognized.

Inventory 10-1-80 noticed same as item before

THE MUSEUM
New Mexico State University

OBJECT: BOX, PACKING

REGISTRATION No: 62: 8: 4108

Date Received: MAR. 1962 X

Date Accepted or Rejected MAR. 1962

Donor: AMADOR

Sketch:

Description of Object:

Serial numbers: NONE

Dimensions:

Length: 14 1/2"

Inventory
10-1-80
noticed same
as item before
←
previous
page
same #

previous page
has same #

Figure 2.7: Portion of a scanned document illustrating resulting PDF with annotations.

Chapter 3

Key Accessions

A listing of the major accessions that comprise the Amador Collection.

Based on the current status of the UM inventory, 305 objects are identified as belonging to the Amador Collection. These 305 objects are distributed across 19 distinct accessions (Table 3.1). This document lists and reviews all known Amador Collection accessions, provides a listing of all the known collection objects by accession, and attempts to briefly summarize what is known about the history of that accession based on museum records as well as other ancillary sources.

It is important to note that UM accession numbers were not assigned and logged in uniform ways over time. For example what would today be written as accession 1962.08 was, in the past, variably written as 62.08 and 1962.8 (Note 3). The same holds for 1973.03 which was also written as 73.03 and 1973.3. Likewise, 1979.01 also written as 1979.1. There are no doubt many other similar examples in museum records.

Note 3: Searching Accession Number Variations

Accession numbers were not written consistently over time. This presents some challenges for retrieving records because database queries need to capture all of the different possible permutations for how a given accession might be written. The following is a sample PastPerfect SQL statement that one can use for searching various ways of writing an accession:

Table 3.1: Accessions that comprise the Amador Collection.

accessno	n
1962.08	139
1969.23	4
1972.03	3
1973.03	55
1979.01	7
1980.01	1
1983.18	2
1994.23	5
1999.06	3
2001.07	1
2002.02	29
2002.13	20
2002.14	3
2002.15	4
2003.31	9
2003.32	3
2004.01	2
2019.43	14
2022.05	1
NA	4
Total	309

```
[62.8]$UPPER(OBJECTS.OBJECTID) or
[62.08]$UPPER(OBJECTS.OBJECTID) or
[1962.8]$UPPER(OBJECTS.OBJECTID) or
[1962.08]$UPPER(OBJECTS.OBJECTID)
```

Newlines are added for code readability.

3.1 1962.08: Amador House Basement ($n=139$)

Accession 1962.08 presently contains 139 object records related to the Amador Collection in PastPerfect Table 3.2.

Table 3.2: Objects in accession 1962.08.

objectid	objname	status	locfield1	locfield2	locfield3	locfield4
1962.08.19	Doily	OK	Textile	NA	Unit_4	Shelf_6
1962.08.92	Flag	OK	Textile	NA	Unit_4	Shelf_3
1962.08.80	Washboard	OK	Basement	Aisle_5	Unit_4	Shelf_4

1962.08.47a	Eggbeater	OK	Basement	Amador Shelf	Unit_B	Shelf_2
1962.08.47b	Jar	OK	Basement	Amador Shelf	Unit_B	Shelf_2
1962.08.109	Tongs, Block Ice	OK	Basement	Amador Shelf	Basement	Unit_B Shelf_4
1962.08.72	Box, Cigar	OK	Basement	Amador Shelf	Unit_B	Shelf_2
1962.08.53	Noisemaker	OK	Basement	Amador Shelf	Unit_B	Shelf_4
1962.08.06	Adobe	OK	Basement	Amador Shelf	Unit_B	Shelf_4
1962.08.78	Lid	OK	Basement	Amador Shelf	Unit_B	Shelf_4
1962.08.106a	Chimney, Lamp	OK	Basement	Amador Shelf	Unit_B	Shelf_4
1962.08.105h	Accessory, Doll	NA	NA	NA	NA	Amador
1962.08.105L	Clock	NA	NA	NA	NA	Amador
1962.08.105s	Artwork	NA	NA	NA	NA	Amador
1962.08.105uu	Figurine	NA	NA	NA	NA	Amador
1962.08.105m	Accessory, Doll	NA	NA	NA	NA	Amador
1962.08.69	Pitcher	OK	Basement	Aisle_8	Unit_2	Shelf_4
1962.08.70	Pitcher	OK	Basement	Aisle_8	Unit_2	Shelf_4
1962.08.117	Bottle	OK	Basement	Aisle_8	Unit_2	Shelf_4
1962.08.81	Pulley	OK	Basement	Aisle_6	Unit_1	Shelf_3
1962.08.84	Brick	OK	Basement	Aisle_6	Unit_4	Shelf_2
1962.08.83	Cookware	OK	Basement	Aisle_8	Unit_4	Shelf_2
1962.08.34	Box, Food Storage	OK	Basement	Aisle_7	Unit_4	Shelf_1
1962.08.108b	Box, Food Storage	OK	Basement	Aisle_7	Unit_4	Shelf_1
1962.08.33	Box, Cigar	OK	Basement	Aisle_4	Unit_6	Shelf_4
1962.08.73	Box	OK	Basement	Aisle_4	Unit_6	Shelf_4
1962.08.11a	Caddy, Tea	OK	Basement	Aisle_4	Unit_6	Shelf_2
1962.08.112	Box, Cigar	OK	Basement	Aisle_4	Unit_6	Shelf_2
1962.08.66	Caddy, Tea	OK	Basement	Aisle_4	Unit_6	Shelf_2
1962.08.96	Box, Jewelry	OK	Basement	Aisle_4	Unit_6	Shelf_4
1962.08.100	Cap, Bottle	OK	Basement	Aisle_8	Unit_3	Shelf_3
1962.08.46	Box	OK	Basement	Aisle_4	Unit_6	Shelf_4
1962.08.32	Box	OK	Basement	Aisle_4	Unit_6	Shelf_4
1962.08.102	Box, Food Storage	OK	Basement	Aisle_7	Unit_4	Shelf_1
1962.08.105u	Box	NA	Basement	Aisle_4	Unit_6	Shelf_3
1962.08.110	Box, Shoe	OK	Basement	Aisle_4	Unit_5	Shelf_3
1962.08.82	NA	Missing	NA	NA	NA	NA
1962.08.74	Box, Jewelry	OK	Basement	Aisle_4	Unit_6	Shelf_4
1962.08.90	Box	OK	Basement	Aisle_7	Unit_4	Shelf_1
1962.08.98	Box, Cigar	OK	Basement	Aisle_4	Unit_6	Shelf_3
1962.08.97	Box	OK	Basement	Aisle_7	Unit_4	Shelf_1
1962.08.99	Box, Cigar	OK	Basement	Aisle_4	Unit_6	Shelf_4
1962.08.108a	Lamp	OK	Basement	Aisle_8	Unit_3	Shelf_4
1962.08.08a	Case, Eyeglass	OK	Basement	Aisle_6	Unit_5	Shelf_2
1962.08.105a	Bottle	NA	Basement	Aisle_10	Unit_2	Shelf_3

1962.08.28	Bottle	OK	Basement	Aisle_10	Unit_2	Shelf_5
1962.08.141	Press, Tortilla	OK	Basement	Aisle_9	Unit_3	Shelf_1
1962.08.55	Coffeepot	OK	Basement	Aisle_9	Unit_3	Shelf_2
1962.08.30a	Pan, Tart	OK	Basement	Aisle_9	Unit_1	Shelf_3
1962.08.88	Box, Cigar	OK	Basement	Aisle_4	Unit_6	Shelf_2
1962.08.42	Pin, Straight	OK	Basement	Aisle_8	Unit_6	Shelf_2
1962.08.25	Can	OK	Basement	Aisle_8	Unit_6	Shelf_3
1962.08.24	Can	OK	Basement	Aisle_8	Unit_6	Shelf_4
1962.08.26	Lantern	OK	Basement	Aisle_8	Unit_5	Shelf_4
1962.08.44	Scoop	OK	Basement	Aisle_8	Unit_4	Shelf_2
1962.08.104	Rack	OK	Basement	Aisle_8	Unit_4	Shelf_2
1962.08.89	Box, Handkerchief	OK	Basement	Aisle_4	Unit_6	Shelf_3
1962.08.93	Box	OK	Basement	Aisle_4	Unit_6	Shelf_3
1962.08.105f	Fragment	NA	Basement	Aisle_4	Unit_6	Shelf_4
1962.08.94	Box	OK	Basement	Aisle_4	Unit_6	Shelf_4
1962.08.95	Box, Jewelry	OK	Basement	Aisle_4	Unit_6	Shelf_4
1962.08.91	Box, Jewelry	OK	Basement	Aisle_4	Unit_6	Shelf_4
1962.08.07	Box, Cigar	OK	Basement	Aisle_4	Unit_6	Shelf_4
1962.08.79	Boot	OK	Textile	Pallet_2	NA	NA
1962.08.08b	Pince-Nez	OK	Basement	Aisle_6	Unit_5	Shelf_2
1962.08.21a	Gown, Baptismal	OK	Textile	NA	Unit_1	Shelf_6
1962.08.21b	Cap, Baby	OK	Textile	NA	Unit_1	Shelf_6
1962.08.20	Button	OK	Textile	NA	Unit_3	Shelf_3
1962.08.22	Diaper	OK	Textile	NA	Unit_3	Shelf_5
1962.08.140a	Andiron	OK	Basement	Aisle_6	Unit_3	Shelf_2
1962.08.140b	Andiron	OK	Basement	Aisle_6	Unit_3	Shelf_2
1962.08.130	Trunk	OK	Basement	Aisle_11	Unit_2	NA
1962.08.142a	Stand, Umbrella	OK	Basement	Aisle_11	Unit_2	NA
1962.08.142b	Bowl	OK	Basement	Aisle_11	Unit_2	NA
1962.08.71	Album, Postcard	OK	Basement	Aisle_5	Unit_5	Shelf_1
1962.08.75	Eyedropper	Missing	NA	NA	NA	NA
1962.08.103	Furniture, Doll	OK	Basement	Amador Shelf	Unit_B	Shelf_2
1962.08.30b	Pan, Tart	OK	Basement	Aisle_9	Unit_1	Shelf_3
1962.08.30c	Pan, Tart	OK	Basement	Aisle_9	Unit_1	Shelf_3
1962.08.29	Cup	OK	Basement	Aisle_5	Unit_4	Shelf_2
1962.08.61	Wick	OK	Basement	Aisle_5	Unit_4	Shelf_2
1962.08.11b	Caddy, Tea	OK	Basement	Aisle_4	Unit_6	Shelf_2
1962.08.87a	Tube	OK	Basement	Aisle_7	Unit_1	Shelf_2
1962.08.87b	Tube	OK	Basement	Aisle_7	Unit_1	Shelf_2
1962.08.87c	Tube	OK	Basement	Aisle_7	Unit_1	Shelf_2
1962.08.128	Form, Dress	OK	Basement	Aisle_9	NA	NA
1962.08.23	Crate	OK	Basement	Aisle_7	Unit_4	Shelf_4

1962.08.39	Toy, Balance	OK	Basement	Amador Shelf	Unit_B	Shelf_5
1962.08.65	Whistle	OK	Basement	Amador Shelf	Unit_B	Shelf_5
1962.08.67a	Churn	OK	Basement	Aisle_8	Unit_6	Shelf_4
1962.08.67b	Jar	OK	Basement	Aisle_8	Unit_6	Shelf_4
1962.08.27	Lantern	Missing	NA	NA	NA	NA
1962.08.68	Lantern	Missing	NA	NA	NA	NA
1962.08.85	Box, Food Storage	OK	Basement	Aisle_11	Unit_2	NA
1962.08.107b	Commode	Missing	NA	NA	NA	NA
1962.08.113	Lantern	Missing	NA	NA	NA	NA
1962.08.124	Lantern	Missing	NA	NA	NA	NA
1962.08.129	Desk	Missing	NA	NA	NA	NA
1962.08.14	Pulley	OK	Basement	Aisle_6	Unit_2	Shelf_3
1962.08.17	Bulb, Light	OK	Basement	Aisle_6	Unit_2	Shelf_4
1962.08.18	Bulb, Light	OK	Basement	Aisle_6	Unit_2	Shelf_4
1962.08.125	Trap, Rodent	OK	Basement	Aisle_9	Unit_3	Shelf_4
1962.08.10	Lamp	Missing	NA	NA	NA	NA
1962.08.12	Crate	Missing	NA	NA	NA	NA
1962.08.43	Pin, Clothing	Missing	NA	NA	NA	NA
1962.08.51	Jar	Missing	NA	NA	NA	NA
1962.08.54	Bowl	Missing	NA	NA	NA	NA
1962.08.58	Holder, Broom	Missing	NA	NA	NA	NA
1962.08.59	Tweezers	Missing	NA	NA	NA	NA
1962.08.63	Cup	OK	Basement	Amador Shelf	Unit_B	Shelf_5
1962.08.64	Plate, Food	Missing	NA	NA	NA	NA
1962.08.101	Box	Missing	NA	NA	NA	NA
1962.08.106b	Basket	OK	Basement	Aisle_11	Unit_2	NA
1962.08.111	Furniture, Doll	OK	Basement	NA	Unit_A	Shelf_4
1962.08.115	Spatula, Kitchen	OK	Basement	Aisle_9	Unit_2	Shelf_2
1962.08.114	Pitcher	Missing	NA	NA	NA	NA
1962.08.116	Wick	Missing	NA	NA	NA	NA
1962.08.118	Broom	Missing	NA	NA	NA	NA
1962.08.119	Box	Missing	NA	NA	NA	NA
1962.08.120	Dustpan	Missing	NA	NA	NA	NA
1962.08.77a	Decoration	OK	Basement	Aisle_5	Unit_4	Shelf_4
1962.08.121	Decoration	Missing	NA	NA	NA	NA
1962.08.122	Coffeepot	Missing	NA	NA	NA	NA
1962.08.126	Collar, Horse	Missing	NA	NA	NA	NA
1962.08.127	Fence	Missing	NA	NA	NA	NA
1962.08.09	Hatpin	Missing	NA	NA	NA	NA
1962.08.123	NA	Missing	NA	NA	NA	NA
1962.08.36	Envelope	Missing	NA	NA	NA	NA
1962.08.38	Newspaper	Missing	NA	NA	NA	NA

1962.08.57	Folder, File	Missing	NA	NA	NA	NA
1962.08.01	Window, Casement	Missing	NA	NA	NA	NA
1962.08.02	Window	Missing	NA	NA	NA	NA
1962.08.03	Door	Missing	NA	NA	NA	NA
1962.08.04	Wardrobe	Missing	NA	NA	NA	NA
1962.08.05	Log	Missing	NA	NA	NA	NA
1962.08.77b	Decoration	OK	Basement	Aisle_5	Unit_4	Shelf_4
1962.08.77c	Decoration	OK	Basement	Aisle_5	Unit_4	Shelf_4
1962.08.77d	Decoration	OK	Basement	Aisle_5	Unit_4	Shelf_4
1962.08.106c	Basket	OK	Basement	Aisle_11	Unit_2	NA

3.1.1 Background regarding 1962.08

The first and largest accession in the Amador Collection is 1962.08. This accession was requested by Laiten L. Camien, Chairman of the Museum Committee. A portion of the accession is composed of objects donated by Mrs. W.E. Whitfield, of Whitfield Transportation Inc. who purchased the Amador house property (Lash 1962).

During Spring24, Alvarez de La Rosa found a deed of gift for 1962.08 and returned it to the museum's filing cabinets (Figure 2.5). The accession's deed of gift is for nine items from the Amador house. This deed of gift is dated September 28, 1962, and was signed as being given by Mrs. W.E. Whitfield from Whitfield Transportation Co. Laiten Camien, Chairman of the Museum Committee signed the deed of gift as the receiving party on behalf of the UM.

In correspondence attached to the deed of gift and dated 20 June 1962, Camien requests various items from the Amador House. He specifically requests:

- 1 window with shutter and sashes.
- 6-8 large rafters
- 4 butt ends from rafters to form part of the museum's collection of tree-ring blocks and to date the structure
- fragments of the fireplace mantel "that may have survived the fire"

Other than a deed of gift identified by Alvarez de La Rosa, Craig did not find physical object records for accession 1962.08 in the file cabinets. This is not surprising because many early accession records are not stored in the filing cabinets, but are instead stored in binders located on in the adjacent bookshelf located in the North-East corner of KH 201 (Figure 2.5). On this bookshelf, there are two sets of paper accession records that pertain to 1962.08. What appear to be the oldest relevant records are contained in a blue canvas covered 3-ring binder that is labeled on the spine as:

66.01 THROUGH 66.19.1
66.01 THROUGH 65.25
59.02.1 TO 19

In correspondence that was found attached to the accession deed of gift and dated 28 September 1962, Camien (Figure 3.1) writes that the museum “was particularly interested in obtaining at [sic] six *vigas* from this building for inclusion in its own building when it is built.” Through additional correspondence it was clear that Camien also hoped to date the Amador house through dendrochronological analysis of the *vigas*. It looks as though the *vigas* were given to someone else and Camien wrote that it is “still desirable to secure at least some blocks from these *vigas* so that the age of the House may be determined.” Camien’s plan to date the building using the *vigas* was laid out in correspondence dated 20 June 1962.



Figure 3.1: Laiten L. Camien, Chairman of the Museum Committee/

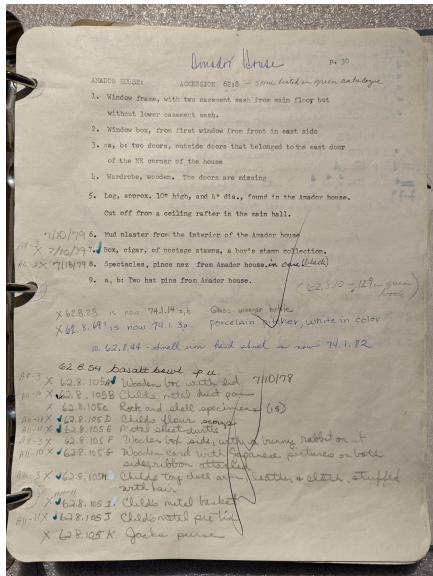
A page in this binder contains a typewritten sheet listing 9 items with several other hand written items that appear to have been added during July of 1979 which represents one of the additional inventories conducted at the UM (Figure 3.2). Included in the hand written document, presumably from 1979, is a sheet that lists various items from object 1962.08.105 which is a toy box that contains many sub-parts.

The second set of early records from the bookcase are contained in a green canvas covered document binder that is labeled on the front cover as:

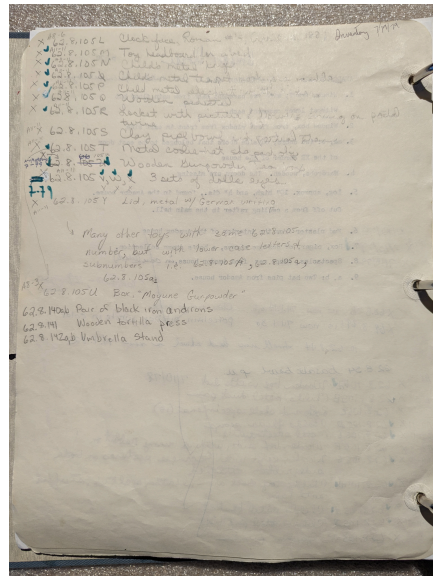
62.04 through 62.12
63.07
64.01
65.03
69.09 through 66.19

This binder contains about 129 object records for the 1962.08 accession. These documents were created in 1966 by an individual with the initials “RMC”. All of these object records indicate that the items were received in March of 1962. This is likely when the objects were recovered from the Amador House and taken to the UM. The paper records in this green binder also contain hand written notes from 1974, 1977, 1979, 1980, and 1987. The 1974 and 1977 dates most often pertain to renumbering the objects. Most of the dated annotations come from 1979 which appears to have been a major inventory of the museum. Several of the items contain hand written notes in red pencil that read “Released” or “discard”. One of the red pencil hand written notes states “discarded Sept. 1973 T.S. Murphy”. It seems likely that all of the released and discard notes were made by this individual because they are all written with the same red pencil and exhibit the same script.

“T.S. Murphy” no doubt refers to Toni Sudar Murphy who was an assistant to



(a) Original 1962.08 accession record (front).



(b) Original 1962.08 accession record (back).

Figure 3.2: Original paper records for accession 1962.08. Click the images to open them, and click again to show full size.

Stanley Bussey, the UM's first Director (Baker 1997, 15). Murphy also developed NMSU's first courses in museum studies, the first of which met during the fall of 1973.

From notes on the record sheets, some objects appear to have been assigned a new number (likely during a subsequent inventory). At various points in time at the UM, the first accession of each year was dedicated found in collections (FIC). Several of the 1962.08 accession items were reaccessioned as FIC during the 1970's. Craig surmises that these objects were found in respective years, assigned to FIC, and sometime later reconnected with the original number. When reaccessioned items are identified, the earlier accession number is reapplied (Note 1, Figure 2.1). Craig is aware of the following record changes:

- 62.8.14 → 77.1.161
- 62.8.25 → 74.1.94
- 62.8.28 → 74.1.14
- 62.8.44 → 74.1.82
- 62.8.59 → 77.1.61
- 62.8.51 → 74.1.42
- 62.8.55 → 77.1.41
- 62.8.67a&b → 74.1.92
- 62.8.69 → 74.1.30

One of the paper records suggests that 1962.08.105 was a box that “contains **53** toys, rocks, and broken pieces of toys” (emphasis in original) (Figure 3.3). The box reads SILVER STATE № 123 CHOICEST MOXUNE GUNPOWDER YUNG SHUN GEIGHT 5 LBS. The sheet notes that the objects will be designated as “Toys” and that the “Toys not in box any longer”. This particular sheet is also dated 7/11/1979 as part of the inventory.

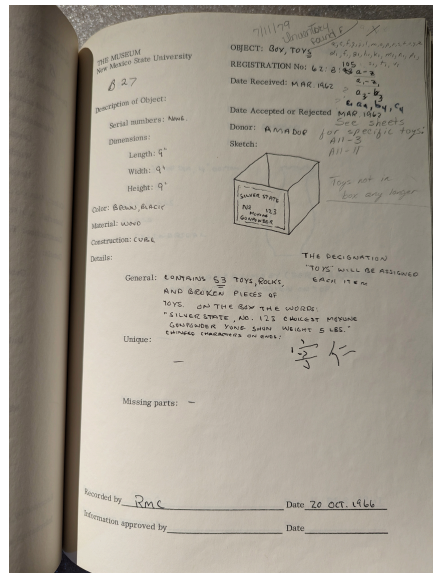


Figure 3.3: Early paper accession record for 1962.08.105. Click the image to expand, click again to show full size.

- 62.8.70 → 74.1.41
- 62.8.112 → 77.1.52
- 62.8.115 → 77.1.131
- 62.8.117 → 77.1.148
- 62.8.125 → 77.1.177
- Several of the objects whose numbers were changed are listed as either “Released” or “Discard”

Alvarez de La Rosa found several objects from 1962.08 were either missing or deaccessioned, and identified two likely reasons for this.

- In the 1960’s the UM was not located in KH, and some items may have gone missing during the move from one facility to another.
- In the 1980’s Bradley Blake, then the Director of the UM, sought to deaccession items that he described “can only be classified as clusters of insignificant junk, and provide premium space for some of the truly valuable items in our possession” (email from B. Blake to Dean Thomas Gale, March 13, 1987). Alvarez de La Rosa suggests that some items from 1962.08 were likely deaccessioned at this time although museum records reviewed so far are not explicit on this point.

3.1.2 Interesting Objects from 1962.08

Among the interesting object from accession 1962.08 are fragments of adobe plaster from the walls of the Amador House Figure 3.4 as well as a washboard Figure 3.5, US flag bearing only 44 stars Figure 3.6, and a wooden tortilla press Figure 3.7 recovered from the basement of the house.

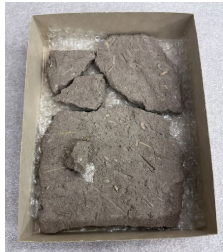


Figure 3.4: Five pieces of adobe plaster from the walls of the Amador House (1962.08.06).



Figure 3.5: Champion brand washboard (1962.08.80).

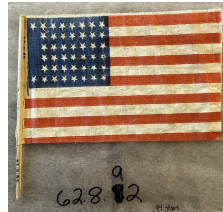


Figure 3.6: Small US flag with 44 stars (1962.08.92). Note the 45 state (Utah) was admitted in 1890, so the flag is likely earlier.



Figure 3.7: Wooden tortilla press with metal hinges (1962.08.141).

3.2 1966.03: Loretto Academy

Clotilde Amador, the daughter of Martín and Refugio Amador, was a student at the Loretto Academy. Accession 1966.03 came from the Loretto Academy. Though this accession is closely related to the Amador Collection, it was **not** included because the objects did not meet the collection criteria (Note 2). However, if there were to be an exception or if the criteria were to be modified, 1966.03 is an accession to consider for inclusion in the Amador Collection.

3.3 1969.16: Adair House

This accession contains objects that came from the Adair House. Craig determined that this accession did not meet the criteria for inclusion in the Amador Collection (Note 2).

3.4 1969.23: Hadrian Amador Donation ($n=6$)

Accession 1969.23 was donated by Hadrian Amador Tucker and his mother Christine Amador. This accession was received by Laiten L. Camien on 1969-08-27. Hadrian Amador was the son of Christine Amador and Ramon Urzua. He was originally named Ramon Urzua, but changed his name to Hadrian Amador Tucker, after his mother married Mr. Tucker. Christine Amador was the daughter of Frank Amador and the granddaughter of Martin Amador who built the Amador house (Figure 2.3).

Accession 1969.23 presently contains 6 object records related to the Amador Collection in PastPerfect Table 3.3. For 1969.23 there were no accession records in the museum binders, but that the deed of gift contained all of the objects and their descriptions. Accession 1969.23 consisted primarily of paper objects like books, magazine, and pictures but included other kinds of objects as well (Figure 3.8a and Figure 3.8b). The paper objects were transferred to the NMSU Río Grande Archives and included in their Amador Collection. Alvarez de La Rosa reported finding records detailing the transfer of these paper objects from the UM to the Archives; 13 objects were transferred pre-1998. The accession deed of gift was refiled in the cabinets. An object record folder was created for 1969.23, new paper records were created for found objects still at the UM, and all of these were filed in the cabinets.

3.4.1 Interesting Objects from 1969.23

Among the interesting objects from 1969.23 were a Smith & Wesson .32 cal pistol (Figure 3.8a) and holster (Figure 3.8b).

Table 3.3: Objects in accession 1969.23. Note the location of 1969.23.22a&b are redacted for security purposes.

objectid	objname	status	locfield1	locfield2	locfield3	locfield4
1969.23.01	Rifle	Missing	NA	NA	NA	NA
1969.23.02	Rifle	Missing	NA	NA	NA	NA
1969.23.20	Vessel	OK	PFA	NA	Unit_5	Shelf_2
1969.23.21	Vessel	OK	PFA	NA	Unit_5	Shelf_2
1969.23.22a	Pistol	OK	NA	NA	NA	NA
1969.23.22b	Holster	OK	NA	NA	NA	NA



(a) Smith & Wesson .32 cal 5-shot double action revolver pistol (1969.23.22a).



(b) Holster for Smith & Wesson .32 cal revolver (1969.23.22b).

Figure 3.8: Smith & Wesson .32 cal 5-shot double action revolver and holster.

3.5 1972.03 Benjamin F. Root and Clotilde Amador Donation ($n=3$)

Paper records indicate that accession 1972.03 was donated by Mrs. Benjamin F. Root and Clotilde Amador. Mrs. Root was the wife of a reverend in Canutillo. Mrs. Root's relationship with Clotilde Amador is unclear, and it is also unclear why they are recorded as having made this donation together. Clotilde Amador was the daughter of Martin Amador, she lived in Las Cruces all her life, and was the last person to live in the Amador House. Alvarez de la Rosa noted that Clotilde Amador passed in 1960; therefore, she could not have donated in person the items from this accession (1973.03). Alvarez de La Rosa believes that the items were likely in the possession of Mrs. Root and when donating them to the UM clarified that these were originally Clotilde Amador's items. At present, UM staff are unclear on the relationship between Clotilde Amador and Mrs. Root nor why Mrs. Root had the items.

Accession 1972.03 presently contains 3 object records related to the Amador Collection in PastPerfect Table 3.4. Alvarez de La Rosa was not able to find a deed of gift for this accession. Information on the accession is located in the

Table 3.4: Objects in accession 1972.03.

objectid	objname	status	locfield1	locfield2	locfield3	locfield4
1972.03.20	Trunk	OK	Basement	Aisle_10	NA	NA
1972.03.21	Bottle	OK	Basement	Aisle_9	Unit_5	Shelf_5
1972.03.23	Vase	Missing	NA	NA	NA	NA

binder entitled 1972.01–1976.14.11.

3.5.1 Interesting Objects from 1972.03

Included in accession 1972.03 is a trunk with Clotilde Amador’s name on it (Figure 3.9) which was included in Reynold’s (1999) “Everyday Life at ‘El Jardín’” exhibition (Section 2.3). Alvarez de La Rosa encountered a folder for 1972.03 in the cabinets and filed an object record for 1972.03.20 that was found among Reynold’s materials for the 1999 *El Jardín* exhibition.



Figure 3.9: Trunk that belonged to Clotilde Amador (1972.03.20).

3.6 1973.03 NMSU Río Grande Archive Transfer ($n=55$)

Accession 1973.03 was a transfer of objects from the NMSU's Río Grande Archives to the UM. Based on Alvarez de La Rosa's review of the accession records, there are 55 items in the accession and all of the items are Amador related (Table 3.5). Given that the accession was a transfer of custody from the NMSU Archives to the UM, there is no deed of gift. Paper records for the accession are found in the binder labeled 72.01-76.14 and in the filing cabinets in KH 210 (Figure 2.5). Within PastPerfect, a prior student (R.C.) working under Otto's direction created the initial 1973.03 digital accession record and listed it as "Found in Collections". This designation is incorrect and the records were corrected by de la Rosa.

The 1973.03 folder in the filing cabinets includes quite a bit of information on the Amador House and several of the records indicate the objects were recovered from the Amador house basement. The folder contains notes from Terry Reynolds including conversations with Amador family members as well as xerox copies of news articles discussing the demolition of the Amador house. Craig is tracking down electronic copies of these articles and is including them in the UM [Amador Collection](#) Zotero group library. Reynold's notes seem to be related to the 1999 "Everyday Life at 'El Jardín'" exhibition (Section 2.3).

3.6.1 Interesting Objects from 1973.03

Among the interesting objects were a US flag with 38 stars (Figure 3.10) and a figurine of a child (Figure 3.11).

3.7 1983.18 James and Gloria Ikard Donation ($n=2$)

Accession 1983.18 was a gift to the UM by James and Gloria Ikard that consists of two bows 1983.18.01 and 1983.18.02 (Figure 3.12 and Table 3.6). Paper records consist of a deed of gift and object forms both of which are located in the filing cabinets in KH 210 (Figure 2.5). A hand written note in the donor file indicates the objects came from the Amador Hotel. Coming from an Amador property would make the bows fall under the criteria for membership in the Amador collection.

The bows are made of wood and are double recurved (Figure 3.12a). The front and back are painted yellow and include designs consisting of three lines (Figure 3.12b). The edges of the bows are painted red. The front of the bows are reinforced with sinew and additional sinew is wrapped around the middle section of the bows. Craig observed similar bows depicted in photographs of the Amador Hotel (Figure 3.13).

Table 3.5: Objects in accession 1973.03.

objectid	objname	status	locfield1	locfield2	locfield3	locfield4
1973.03.01	Vase	OK	Basement	Aisle_8	Unit_4	Shelf_1
1973.03.02	Bottle, Drinking	OK	Basement	Aisle_8	Unit_4	Shelf_1
1973.03.03	Bottle	OK	Basement	Aisle_10	Unit_2	Shelf_5
1973.03.04	Bottle, Cologne	Missing	NA	NA	NA	NA
1973.03.05	Fan, Hand	OK	Basement	Amador Shelf	Unit_B	Shelf_1
1973.03.06	Fan, Fixed	OK	Basement	Amador Shelf	Unit_B	Shelf_1
1973.03.07	Toy	Missing	NA	NA	NA	NA
1973.03.08	Box	OK	Basement	Aisle_5	Unit_6	Shelf_1
1973.03.09	Toy	OK	Basement	Amador Shelf	Unit_B	Shelf_4
1973.03.10	Scapular	OK	Textile	NA	Unit_2	Shelf_7
1973.03.11	Purse	OK	Basement	Aisle_2	Unit_1	Shelf_8
1973.03.12	Belt, Accessory	Missing	NA	NA	NA	NA
1973.03.13	Belt, Accessory	Missing	NA	NA	NA	NA
1973.03.14	Flag	OK	Textile	NA	Unit_4	Shelf_3
1973.03.16	Egg, Easter	OK	Basement	Amador Shelf	Unit_B	Shelf_4
1973.03.17	Piece, Chess	OK	Basement	Amador Shelf	Unit_B	Shelf_5
1973.03.18	Piece, Chess	OK	Basement	Amador Shelf	Unit_B	Shelf_5
1973.03.20	Figurine	OK	Basement	Amador Shelf	Unit_B	Shelf_5
1973.03.21	Toy	OK	Basement	Amador Shelf	Unit_B	Shelf_5
1973.03.22	Pincushion	OK	Textile	NA	Unit_3	Shelf_3
1973.03.23	Collar	Missing	NA	NA	NA	NA
1973.03.24	Collar	Missing	NA	NA	NA	NA
1973.03.25	Fabric	Missing	NA	NA	NA	NA
1973.03.26	Paper, Craft	OK	Basement	Amador Shelf	Unit_B	Shelf_4
1973.03.27	Roller, Hair	OK	Basement	Aisle_5	Unit_4	Shelf_3
1973.03.28	Toy	Missing	NA	NA	NA	NA
1973.03.29	Pen	Missing	NA	NA	NA	NA
1973.03.30	Pen	OK	Basement	Aisle_8	Unit_6	Shelf_2
1973.03.31	Pen	Missing	NA	NA	NA	NA
1973.03.32	Roller, Hair	OK	Textile	NA	Unit_3	Shelf_3
1973.03.33	Box, Needlework	OK	Textile	NA	Unit_3	Shelf_3
1973.03.34	Box	OK	Basement	Amador Shelf	Unit_B	Shelf_5
1973.03.35	Opener, Bottle	OK	Basement	Aisle_5	Unit_4	Shelf_2
1973.03.36	Pin, Bowling	OK	Basement	Amador Shelf	Unit_B	Shelf_4
1973.03.37	Ruler	OK	Basement	Amador Shelf	Unit_B	Shelf_4
1973.03.39	Figure, Religious	OK	Basement	Amador Shelf	Unit_B	Shelf_5
1973.03.40	Medal	OK	Textile	NA	Unit_3	Shelf_3
1973.03.41	Scoop	OK	Basement	Aisle_9	Unit_2	Shelf_3
1973.03.42	Tin	OK	Basement	Aisle_10	Unit_1	Shelf_6
1973.03.43	Tin	OK	Basement	Aisle_7	Unit_4	Shelf_1
1973.03.44	Tin	OK	Basement	Aisle_10	Unit_1	Shelf_6
1973.03.45	Canister, Food Storage	OK	Basement	Aisle_9	Unit_3	Shelf_4
1973.03.46	Clock, Table	OK	Basement	Aisle_7	Unit_4	Shelf_2
1973.03.47	Canister, Food Storage ₂₆	OK	Basement	Aisle_8	Unit_6	Shelf_2
1973.03.48	Pillbox	OK	Basement	Aisle_8	Unit_6	Shelf_2
1973.03.49a	Pillbox	OK	Basement	Aisle_8	Unit_6	Shelf_2
1973.03.49b	Pillbox	OK	Basement	Aisle_8	Unit_6	Shelf_2
1973.03.50	Pin, Campaign	OK	Basement	Amador Shelf	Unit_B	Shelf_4
1973.03.52	Measure, Culinary	OK	Basement	Aisle_8	Unit_3	Shelf_3
1973.03.53a	Toy	OK	Basement	Aisle_4	Unit_4	Shelf_6
1973.03.53b	Toy	OK	Basement	Aisle_4	Unit_4	Shelf_6



Figure 3.10: Small US flag with 38 stars (1973.03.14).



Figure 3.11: Figurine of a child wearing a white shirt and black hat (1973.03.20).

Table 3.6: Objects in accession 1983.18.

objectid	objname	status	locfield1	locfield2	locfield3	locfield4
1983.18.01	Bow	OK	Room_103	NA	Unit_1	Shelf_2
1983.18.02	Bow	OK	Room 103	NA	Unit_1	Shelf_2

Table 3.7: Objects in accession 1994.23.

objectid	objname	status	locfield1	locfield2	locfield3	locfield4
1994.23.01	Cover, Corset	OK	Textile	NA	Unit_3	Shelf_3
1994.23.02	Fabric	OK	Textile	NA	Unit_3	Shelf_3
1994.23.03	Embroidery	OK	Textile	NA	Unit_3	Shelf_3
1994.23.04	Embroidery	OK	Textile	NA	Unit_3	Shelf_3
1994.23.05	Embroidery	OK	Textile	NA	Unit_3	Shelf_3

3.8 1994.23 NMSU Río Grande Archives Transfer ($n=5$)

Accession 1994.23 was a transfer of objects from the NMSU Library Archives to the UM. There are 5 items in the accession and all of the items are textiles (Table 3.7) that belonged to Julietta Amador who was the daughter of Martín Amador and husband to Fabian García (Figure 2.3).

Given that the accession was a transfer of custody from the NMSU Archives to the UM, there is no deed of gift. Paper records for the accession are found in the filing cabinets in KH 210 (Figure 2.5) under 2002.02. The object records provide information and documentation on the owner of the garments.

3.8.1 Interesting Objects from 1994.23

Among the interesting objects in the accession are a corset cover still in original packaging (Figure 3.14) and pieces of embroidery (Figure 3.15).

3.9 1999.06 Terry Corbett Donation ($n=3$)

Accession 1999.06 was a donation made by Terry Corbett. The objects comprising this donation were given to Mr. Corbett by Lucille Amador in 1962 (Table 3.8). Lucille Amador was the daughter of Celso Amador and grandniece of Martín Amador. Celso Amador was the son of José María Amador, Martín Amador’s brother. Celso Amador was the nephew of Martín Amador. Objects formerly designated as **Celso-Amador Collection** were added to the **Amador Collection** by Alvarez de La Rosa.

The objects were used in Lucille Amador’s house when she was a child. Based on information in the folder for 1999.06, it appears that “Las Cruces Furniture Company” was owned by Celso Amador, and inscription on the plates indicate he was the property owner.

Table 3.8: Objects in accession 1999.06.

objectid	objname	status	locfield1	locfield2	locfield3	locfield4
1999.06.01	Plate, Food	OK	Basement	Aisle_8	Unit_1	Shelf_2
1999.06.02	Plate, Food	OK	Basement	Aisle_8	Unit_1	Shelf_2
1999.06.03	Plate, Food	OK	Basement	Aisle_8	Unit_1	Shelf_2

Table 3.9: Objects in accession 2001.07.

objectid	objname	status	locfield1	locfield2	locfield3	locfield4
2001.07.01	Press, Culinary	Missing	NA	NA	NA	NA

3.9.1 Interesting Objects from 1999.06

Interesting objects from the accession includes plates bearing the names “Las Cruces Furniture Company” and identify Celso C. Amador as the proprietor (Figure 3.16 and Figure 3.17).

3.10 2001.07 Terrie Cornell Donation ($n=1$)

Accession 2001.07 was a gift of one object from the Amador Hotel that was made by Terrie Cornell (Table 3.9). This object could not be located in the UM. Additionally, there are no paper object records in the filing cabinets, there is only the Deed of Gift. Information from the Deed of Gift indicates that the item was a gift from Roberta Sabasteen in January of 1992.

3.11 2002.02 NMSU Río Grande Archives Transfer ($n=29$)

Accession 2002.02 was a transfer of objects from the NMSU Archives to the UM. Based on Alvarez de La Rosa’s review of the accession records, there are 29 items in the accession and all of the items are part of the Amador Collection (Table 3.10). Given that the accession was a transfer of custody from the NMSU Archives to the UM, there is no deed of gift. Paper records for the accession are found in the filing cabinets in KH 210 (Figure 2.5) under 2002.02. None of the objects from the accession were entered into PastPerfect. de la Rosa located all 29 objects in the accession and entered their information into PastPerfect.

3.11.1 Interesting Objects from 2002.02

Among the interesting objects in the accession are a commemorative ribbon (Figure 3.18) and an embroidered quilt square (Figure 3.19).

Table 3.10: Objects in accession 2002.02.

objectid	objname	status	locfield1	locfield2	locfield3	locfield4
2002.02.01	Fabric	OK	Textile	NA	Unit_3	Shelf_3
2002.02.02	Fabric	OK	Textile	NA	Unit_3	Shelf_3
2002.02.03	Embroidery	OK	Textile	NA	Unit_3	Shelf_3
2002.02.04	Fabric	OK	Textile	NA	Unit_3	Level_3
2002.02.05	Fabric	OK	Textile	NA	Unit_3	Shelf_3
2002.02.06	Fabric	OK	Textile	NA	Unit_3	Shelf_3
2002.02.07	Embroidery	OK	Textile	NA	Unit_3	Level_3
2002.02.08	Hat	OK	Textile	NA	Unit_3	Shelf_3
2002.02.09	Towel	OK	Textile	NA	Unit_4	Shelf_6
2002.02.10a	Fabric	OK	Textile	NA	Unit_3	Shelf_3
2002.02.10b	Fabric	OK	Textile	NA	Unit_3	Shelf_3
2002.02.10c	Fabric	OK	Textile	NA	Unit_3	Shelf_3
2002.02.10d	Fabric	OK	Textile	NA	Unit_3	Shelf_3
2002.02.10e	Fabric	OK	Textile	NA	Unit_3	Shelf_3
2002.02.10f	Fabric	OK	Textile	NA	Unit_3	Shelf_3
2002.02.10g	Fabric	OK	Textile	NA	Unit_3	Shelf_3
2002.02.10h	Fabric	OK	Textile	NA	Unit_3	Shelf_3
2002.02.10j	Fabric	OK	Textile	NA	Unit_3	Shelf_3
2002.02.10k	Fabric	OK	Textile	NA	Unit_3	Shelf_3
2002.02.11	Ribbon, Commemorative	OK	Textile	NA	Unit_3	Shelf_3
2002.02.12	Quilt	OK	Textile	NA	Unit_3	Shelf_3
2002.02.13	Embroidery	OK	Textile	NA	Unit_3	Level_3
2002.02.14	Doily	OK	Textile	NA	Unit_4	Shelf_6
2002.02.15	Doily	OK	Textile	NA	Unit_3	Shelf_3
2002.02.16	Thread	OK	Textile	NA	Unit_3	Shelf_3
2002.02.17	Thread	OK	Textile	NA	Unit_3	Shelf_3
2002.02.18	Thread	OK	Textile	NA	Unit_3	Shelf_3
2002.02.19	Thread	OK	Textile	NA	Unit_3	Shelf_3
2002.02.20	Thread	OK	Textile	NA	Unit_3	Shelf_3

Table 3.11: Objects in accession 2002.13.

objectid	objname	status	locfield1	locfield2	locfield3	locfield4
2002.13.01a	Dress, Wedding	OK	Textile	NA	Rack_2	NA
2002.13.01b	Dress, Wedding	OK	Textile	NA	Rack_2	NA
2002.13.02	Plate, Food	OK	Basement	Aisle_8	Unit_2	Shelf_2
2002.13.03a	Teapot	OK	Basement	Aisle_8	Unit_2	Shelf_2
2002.13.03b	Lid	OK	Basement	Aisle_8	Unit_2	Shelf_2
2002.13.04	Knife	OK	Basement	Aisle_8	Unit_1	Shelf_4
2002.13.05a	Spoon, Demitasse	OK	Basement	Aisle_8	Unit_1	Shelf_4
2002.13.05b	Spoon, Demitasse	OK	Basement	Aisle_8	Unit_1	Shelf_4
2002.13.06	Spoon, Dessert	OK	Basement	Aisle_8	Unit_1	Shelf_4
2002.13.07a	Spoon, Demitasse	OK	Basement	Aisle_8	Unit_1	Shelf_4
2002.13.07b	Spoon, Demitasse	OK	Basement	Aisle_8	Unit_1	Shelf_4
2002.13.07c	Spoon, Demitasse	OK	Basement	Aisle_8	Unit_1	Shelf_4
2002.13.07d	Spoon, Demitasse	OK	Basement	Aisle_8	Unit_1	Shelf_4
2002.13.07e	Spoon, Demitasse	OK	Basement	Aisle_8	Unit_1	Shelf_4
2002.13.08	Spoon, Dessert	OK	Basement	Aisle_8	Unit_1	Shelf_4
2002.13.09	Spoon, Demitasse	OK	Basement	Aisle_8	Unit_1	Shelf_4
2002.13.10	Spoon, Dessert	OK	Basement	Aisle_8	Unit_1	Shelf_4
2002.13.11	Fork, Carving	OK	Basement	Aisle_8	Unit_1	Shelf_4
2002.13.12	Tray	OK	Basement	Amador Shelf	Unit_B	Shelf_2
2002.13.13	Dish, Serving	OK	Basement	Aisle_8	Unit_1	Shelf_4

3.12 2002.13 Patricia Teitsch Donation ($n=20$)

Accession 2002.13 was a donation from Patricia Teitsch who is a granddaughter of Juan Amador and Mary Woodworth (Note 2 and Figure 2.3). Juan Amador was the second child of Marín Amador; therefore, Patricia Teitsch is the great-granddaughter of Martín Amador. There are 20 items in the accession and all of them are part of the Amador Collection (Table 3.11). Paper records for this accession are located in the filing cabinets in KH 210 (Figure 2.5) under both donor files and individual object records filed at 2002.13.

3.12.1 Interesting Objects from 2002.13

Among the interesting objects in the accession are a wedding shirt (Figure 3.20a) and dress (Figure 3.20b) which are part of a wedding ensemble that according to UM records was first worn in 1898 by Mary Woodworth, and later worn by Patricia Teitsch in 1955.

Table 3.12: Objects in accession 2002.14.

objectid	objname	status	locfield1	locfield2	locfield3	locfield4
2002.14.01	Key	OK	Basement	Aisle_8	Unit_3	Shelf_2
2002.14.02	Key	OK	Basement	Aisle_8	Unit_3	Shelf_2
2002.14.03	Key	OK	Basement	Aisle_8	Unit_3	Shelf_2

Table 3.13: Objects in accession 2002.15.

objectid	objname	status	locfield1	locfield2	locfield3	locfield4
2002.15.01	Book	OK	Basement	Aisle_5	Unit_5	Shelf_1
2002.15.02	Book	OK	Basement	Aisle_5	Unit_5	Shelf_1
2002.15.03	Book	OK	Basement	Aisle_5	Unit_5	Shelf_1
2002.15.04	Book	OK	Basement	Aisle_5	Unit_5	Shelf_1

3.13 2002.14 Virginia A. Jordan Donation ($n=3$)

Accession 2002.14 was a donation from Virginia A. Jordan who is the daughter of Mari Paulina García and Mr. Adair. Maria Paulina García was the granddaughter of Martín Amador making Virginia his great-granddaughter (Figure 2.3). The donation was made in honor of (Maria) Paulina García Amador.

The accession is composed of 3 objects which consist of keys to the Amador House (Table 3.12). Paper records include a deed of gift and individual object forms. Both the deed of gift and object records were located in the tranche of documents (Figure 2.4). Both sets of records were returned to their proper place in the filing cabinets in KH 210 (Figure 2.5).

3.13.1 Interesting Objects from 2002.14

Accession 2002.14 consists of keys to the Amador House (Figure 3.21 and 3.22).

3.14 2002.15 Richard Pearson Donation ($n=4$)

Accession 2002.15 was a donation from Richard Pearson was the son of Julliette Margaret Amador, the daughter of Juan Amador, and the granddaughter of Martín Amador (Figure 2.3). Richard Pearson was Martín Amador's great-grandson. The accession consists of 4 objects which are books from the Amador Hotel (Table 3.13). Paper records include a deed of gift and individual object forms. Records were placed in the filing cabinets in KH 210 (Figure 2.5).

3.14.1 Interesting Objects from 2002.15

Accession 2002.15 consists of books (Figure 3.23 and 3.24) that were recovered from the Amador Hotel.

Table 3.14: Objects in accession 2003.31.

objectid	objname	status	locfield1	locfield2	locfield3	locfield4
2003.31.01	Shawl	OK	Textile	NA	Rack_2	NA
2003.31.02	Dress	OK	Textile	NA	Rack_4	NA
2003.31.03	Dress, Day	OK	Textile	NA	Rack_2	NA
2003.31.04	Dress, Cocktail	OK	Textile	NA	Rack_4	NA
2003.31.05	Dress	OK	Textile	NA	Rack_4	NA
2003.31.06	Dress	OK	Textile	NA	Rack_2	NA
2003.31.07	Camisole	OK	Textile	NA	Unit_3	Shelf_6
2003.31.08	Skirt	OK	Textile	NA	Rack_2	NA
2003.31.09	Teddy	OK	Textile	NA	Unit_3	Shelf_6

3.15 2003.31 Frances Pack Donation ($n=9$)

Accession 2003.31 was a donation from Frances Pack made in honor of her grandparents Celso Amador and Francesca Lucero de Amador (Figure 2.3). Frances Pack was the daughter of Lucille Amador. Celso Amador was the nephew of Marín Amador, the son of José Maria Amador, Martín’s brother. The accession consists of 9 objects which are clothing (Table 3.14). Paper records consist of a deed of gift and object records, all of which were placed in the filing cabinets in KH 210 (Figure 2.5).

Ulrich labeled object 2003.31.03 (Figure 3.25) a “Wedding Dress” in PastPerfect’s `Object Name` field (2021-04-14). However, original paper records describe the object as a “day dress” and Ulrich gave no justification for designating the object a Wedding Dress; therefore, Alvarez de La Rosa changed `Object Name` back to the object name back to “Dress, Day”.

3.15.1 Interesting Objects from 2003.31

Accession 2003.31 consists of women’s clothing including several dresses (Figure 3.25 and 3.26).

3.16 2003.32 Emelice Amador García Donation ($n=3$)

Accession 2003.32 was a donation made by Emelice Amador García. This individual was not in Gilbreath’s genealogical data though Alvarez de La Rosa attributed the objects to the Amador collection based on the surname. Some additional research is warranted. The accession consists of 3 objects (Table 3.15). Paper records consist of object forms, but no deed of gift was found in museum records. The object records were found in the tranche of Amador documents left in KH 210 (Figure 2.4) and returned to the filing cabinets (Figure 2.5).

Table 3.15: Objects in accession 2003.32.

objectid	objname	status	locfield1	locfield2	locfield3	locfield4
2003.32.01	Pillbox	OK	Basement	Aisle_8	Unit_6	Shelf_2
2003.32.02	Pendant	OK	Textile	NA	Unit_2	Shelf_7
2003.32.03	Pendant	OK	Textile	NA	Unit_2	Shelf_7

Table 3.16: Objects in accession 2004.01.

objectid	objname	status	locfield1	locfield2	locfield3	locfield4
2004.01.01	Book	OK	Basement	Aisle_5	Unit_5	Shelf_1
2004.01.02	Book	OK	Basement	Aisle_5	Unit_5	Shelf_1

3.16.1 Interesting Objects from 2003.32

Accession 2003.32 consists of a pill box (Figure 3.27) and two pendants (Figure 3.28).

3.17 2004.01 Patricia Teitsch Donation ($n=2$)

Accession 2004.01 was a donation by Patricia Teitsch in July of 2002 and received by Curator Terry Reynolds. Ms. Teitsch was the granddaughter of Juan Amador and Mary Woodworth. Juan Amador was the second child of Martín Amador which makes Patricia Teitsch his great-granddaughter. The donation consists of two books (Table 3.16). Paper records for this accession include a deed of gift and object records, both of which are filed in KH 210 (Figure 2.5). Alvarez de La Rosa created digital records in PastPerfect.

3.17.1 Interesting objects from 2004.01

Accession 2004.01 consists of two books (Figure 3.29 and 3.30) which bear stamps (Figure 3.29b) and hand writing (Figure 3.30b) linking them to the Amador Hotel.

3.18 2019.43 Judie Robbie Jordan Donation ($n=14$)

Accession 2019.43 was a donation by Judie Robbie Jordan on behalf of her parents Virginia Adair Jordan and William Jordan (husband). Virginia Adair Jordan was the daughter of Maria Paulina Gardía and Mr. Adair. Maria Paulina García was the granddaughter of Martín Amador. This makes Virginia Adair Jordan the great-granddaughter of Martín Amador and Judie Robbie Jordan the great-great-granddaughter of Martín Amador.

Table 3.17: Objects in accession 2019.43.

objectid	objname	status	locfield1	locfield2	locfield3	locfield4
2019.43.01a	Doll	OK	Textile	Pallet_3	NA	NA
2019.43.01b	Bonnet	OK	Textile	NA	Unit_4	Shelf_1
2019.43.01c	Sock	OK	Textile	NA	Unit_4	Shelf_1
2019.43.01d	Wig	OK	Textile	NA	Unit_4	Shelf_1
2019.43.01e	Wig	OK	Textile	NA	Unit_4	Shelf_1
2019.43.02	Pillowcase	OK	Textile	Pallet_3	NA	NA
2019.43.03	Accessory, Doll	OK	Textile	NA	Unit_4	Shelf_1
2019.43.04a	Accessory, Doll	OK	Textile	NA	Unit_4	Shelf_1
2019.43.04b	Accessory, Doll	OK	Textile	NA	Unit_4	Shelf_1
2019.43.05a	Accessory, Doll	OK	Textile	NA	Unit_4	Shelf_1
2019.43.05b	Accessory, Doll	OK	Textile	NA	Unit_4	Shelf_1
2019.43.06	Cape	Missing	NA	NA	NA	NA
2019.43.07	Petticoat	OK	Textile	NA	Rack_4	NA
2019.43.08	Accessory, Doll	OK	Basement	Wall	Unit_15	NA

The accession consists of 14 objects (Table 3.17) most of which are accessories for a Stevens doll (2019.43.01a). Alvarez de La Rosa created a new box in KH209A (Textile Room) to house most of 2019.43. Paper records consist of a deed of gift and physical object records. The deed of gift was found filed with the object records and was returned to the donor section of the filing cabinets in KH210 (Figure 2.5).

3.18.1 Interesting objects from 2019.43

Accession 2019.43 consists of a range of objects including a doll (Figure 3.31) and accessories, a commemorative pillow (Figure 3.32), children's shoes (Figure 3.33), and a carriage (Figure 3.34).



(a) Object 1983.18.01 a recurved bow. This object came from the Amador Hotel.



(b) Detail of object 1983.18.01 a recurved bow showing design details. This object came from the Amador Hotel.

Figure 3.12: Object 1983.18.01 a recurved bow from the Amador Hotel.



Figure 3.13: Photograph of the inside of the Amador Hotel on April 11, 1951. Photograph by Michael Ochs, <https://www.gettyimages.com.au/detail/news-photo/the-interior-of-the-amador-hotel-in-las-cruces-new-mexico-news-photo/1247334191>



Figure 3.14: A Three piece Royal Society brand corset cover in original packaging (1994.23.01).



Figure 3.15: (Embroidery 1994.23.04).



Figure 3.16: Porcelain plate with painting of pink roses and leaves. Text on the plate reads “La muebleria | Cerca del Convento, |”Las Cruces Furniture Company,” | l Mejor Lugar para sus compras | en Abonos o al contado, CELSO C. AMADOR, PROP. ” (1999.06.01).



Figure 3.17: Porcelain plate with painting of green grapes and orange leaves. Text on the plate reads “La muebleria | Cerca del Convento, |”La muebleria | Cerca del Convento, |”Las Cruces Furniture Company,” | l Mejor Lugar para sus compras | en Abonos o al contado, CELSO C. AMADOR, PROP.” (1999.06.02).



Figure 3.18: Commorative ribbon that reads “St Michael’s Literary Association | Santa Fe, N. Mex.” and shows St. Michael fighting a deamon (2002.02.11).



Figure 3.19: Hand stitched quilt rectangle. One side embroidery reads “C.T.A.” and the year “1893” (2002.02.12).



(a) Brocade silk shirt (2002.13.01a), part of a wedding ensemble.



(b) Brocade silk skirt (2002.13.01b), part of a wedding ensemble.

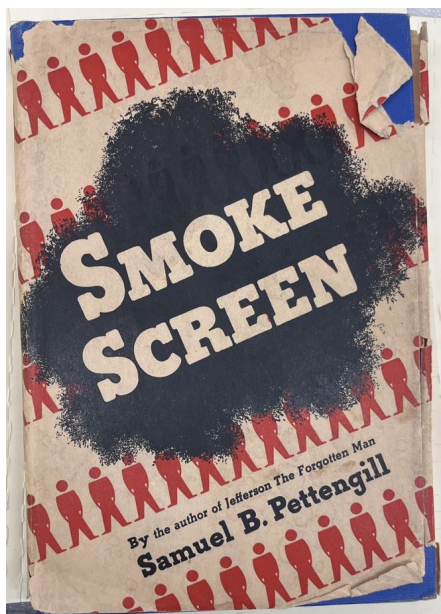
Figure 3.20: Wedding ensemble worn by Mary Woodworth in 1898 and Patricia Teitsch in 1955 (2003.13.01ab).



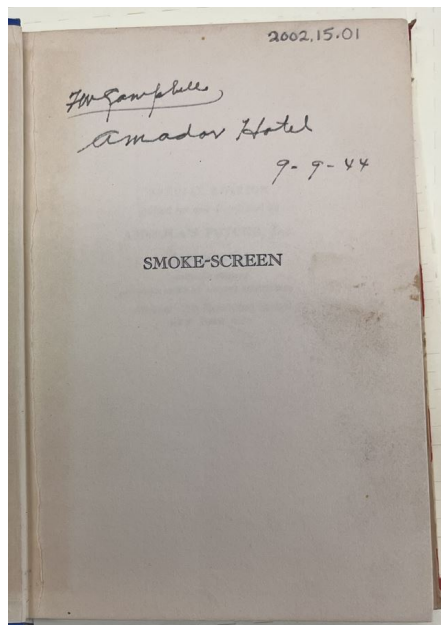
Figure 3.21: Key to the Amador House (2002.14.03).



Figure 3.22: Key to the Amador House (2002.14.03).

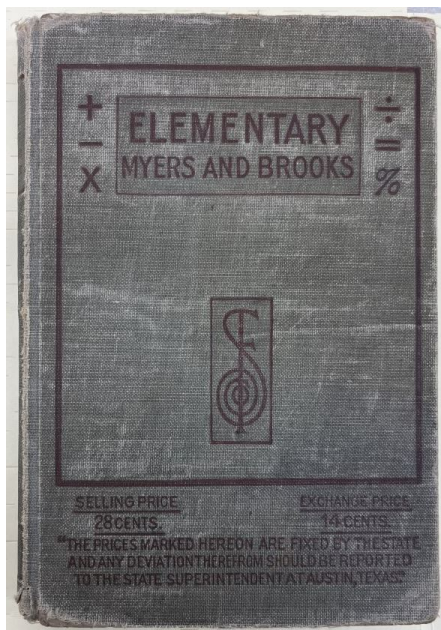


(a) Cover of book from Amador Hotel
Richard Pearson (2002.15.01.)



(b) Title page of book from Amador Hotel
(2002.15.01). Handwriting on the page
reads “?? Campbell ? Amador Hotel /

Figure 3.23: Book (2002.15.01) from the Amador Hotel.



(a) Cover of book from Amador Hotel (2002.15.02).



(b) Endsheets of book from Amador Hotel (2002.15.02).

Figure 3.24: Book (2002.15.02) from the Amador Hotel.



Figure 3.25: Short sleeved cotton day dress with floral embroidery (2003.31.03.)



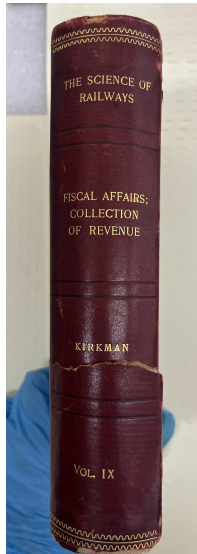
Figure 3.26: Lightweight cotton dress with lace (2003.31.06).



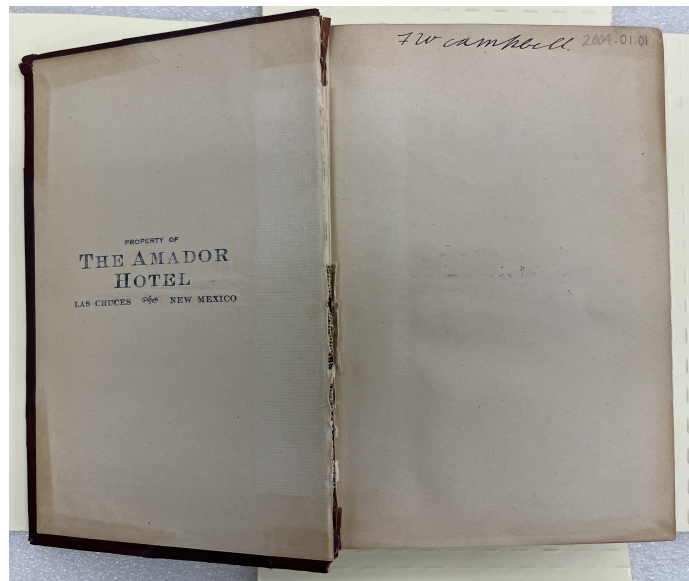
Figure 3.27: Circular cardboard pill-box (2003.32.03). One side reads "55 89/ Mrs. Garcia take at bed-time/ Lane".



Figure 3.28: Silver religious pendant (2003.32.03). One side (showing) depicts the Virgin Mary while the other side depicts an adult Jesus displaying the sacred heart.

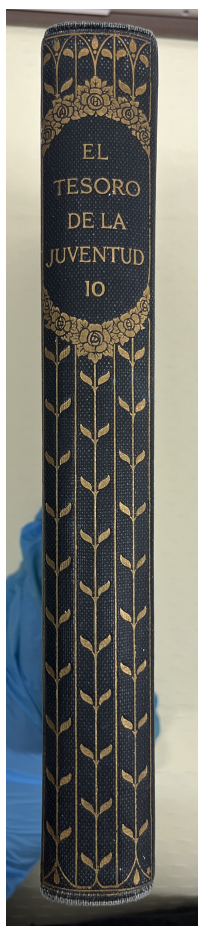


(a) Spine of hardcover book entitled *The Science of Railways* by Marshall M. Kirkman (2004.01.01). This object is volume IX which covers “Fiscal Affairs: Collection of Revenue”.

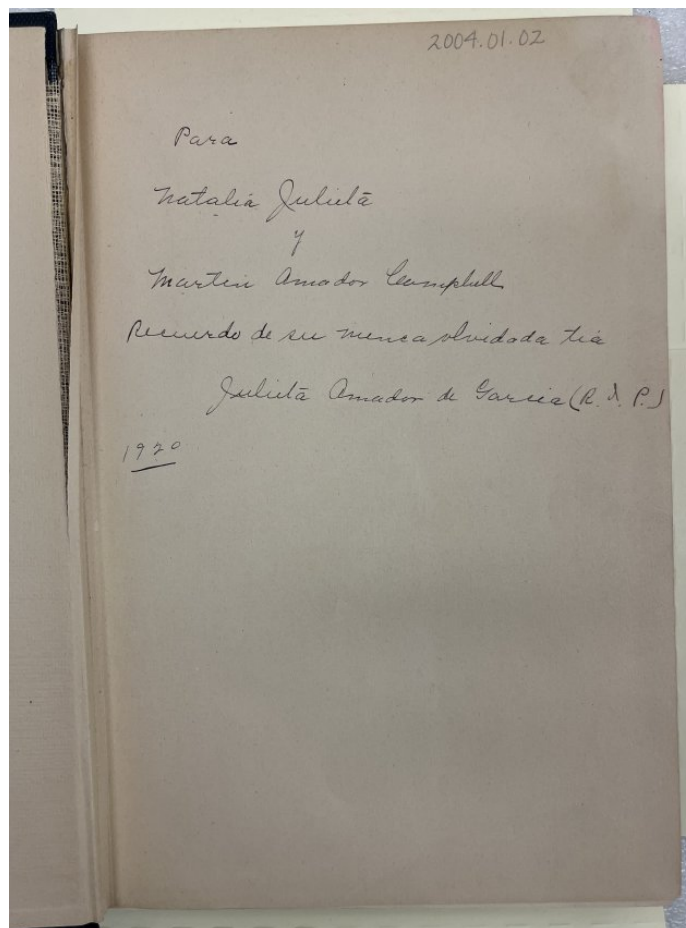


(b) Inside cover of book entitled *The Science of Railways* by Marshall M. Kirkman (2004.01.01). Inside cover bears a blue stamp that reads “PROPERTY OF THE AMADOR HOTEL / LAS CRUCES NEW MEXICO and is signed”F W Campbell”.

Figure 3.29: Red Hardcover book entitled *The Science of Railways* by Marshall M. Kirkman (2004.01.01). This object is volume IX which covers “Fiscal Affairs: Collection of Revenue”.



(a) Spine of blue hardbound book entitled *El Tesoro de la Juventud 10* by Dr. Estansilao S. Zaballos (2004.01.02).



(b) Inside cover of blue hardbound book entitled *El Tesoro de la Juventud 10* by Dr. Estansilao S. Zaballos (2004.01.02). Handwritten text on the inside cover reads “Para Natalia Julieta y Martin Amador Campbell / Recuerdo de su nunca olvidada tia Julieta Amador de Garcia ? (R.I.P.(?)) 1920.”

Figure 3.30: Blue hardbound book entitled *El Tesoro de la Juventud 10* by Dr. Estansilao S. Zaballos (2004.01.02).



(a) Dollie Stevens doll (2019.43.01a) showing dress and shoes.

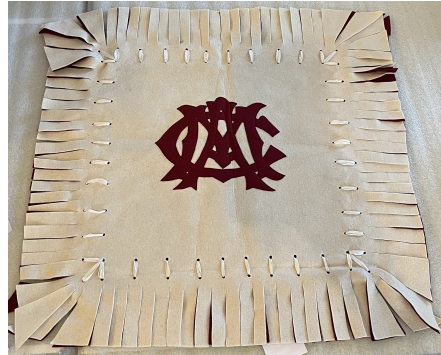


(b) Detail of Dollie Stevens doll (2019.43.01a) showing kiss imprint on left cheek.

Figure 3.31: Dollie Stevens doll with removable blond wig (2019.43.01a).



(a) New Mexico College of Agricultural and Mechanical Arts (now NMSU) commemorative pillow (2019.43.02) showing crimson side with a yucca motif.



(b) New Mexico College of Agricultural and Mechanical Arts (now NMSU) commemorative pillow (2019.43.02) showing white side with the initials CAM which stands for College of Agricultural and Mechanical Arts.

Figure 3.32: New Mexico College of Agricultural and Mechanical Arts (now NMSU) commemorative pillow (2019.43.02).



(a) Cured leather children's boots (2019.43.04ab) showing stitching and construction.



(b) Cured leather children's boots (2019.43.04ab) showing soles and use wear.

Figure 3.33: Cured leather children's boots (2019.43.04ab). The shoes are size 6 1/2. The number "9525" is stamped on the inside of the left shoe and the number "9585" is stamped inside of the right shoe.



Figure 3.34: Baby or doll carriage made of wood with metal wheels.

Chapter 4

Resources and References

Research related to the Amador Collection and Family.

4.1 Books, Journal Articles, and Theses

Book, Journal Article, Theses citations can be accessed via the UM's public Zotero [Amador Collection group library](#).

4.2 Museum Exhibitions

- “Everyday Life at ‘El Jardín’” at the University Museum from June 4 – December 31, 1999. Exhibition curated by Terry Reynolds (1999).
- “The Amadors: Family, Culture, and Identity in Early Las Cruces” at the Branigan Cultural Center from October 20, 2023 – January 13, 2024. Exhibition curated by Dennis Daily, Dylan McDonald, and Jennifer Olguin (2023).

4.3 NMSU Library and Archive Holdings

- Amador family papers, 1836-1949, Las Cruces Branson Library Archives, Non-circulating MS 0004. 40 Linear Feet: 106 boxes
- Terry R. Reynolds research files, 1979-1982. Las Cruces Branson Library Archives, Non-circulating MS 0342. 16.5 Linear Feet: Boxes 1-11 and 13-19 Housed in 32A:6-7; Box 12 Housed in 7A:5; Map Rolls Housed in 7A:3; Map folders 6 total, map case 10 drawers 7 and 9

4.4 Select Recent News Coverage

- In 2018 Martin Amador Campbell worked to [restore the Amador mausoleum](#) at St. Genevive Catholic Church.
- 2021 the Las Cruces city council acting as the Las Cruces Tax Increment Development board approved \$2 million to [continue restoration](#) of the Amador Hotel. The news piece notes that J. Paul Taylor played an important role in preventing the hotel from being destroyed during the urban renewal of the 1960's.
- In 2022 NMSU Archives and Special Collections received a grant for \$350,000 from the National Endowment for Humanities to [digitize the collection](#) of 15,000 documents in the Amador family collection.

References

- Baker, Chris. 1997. "The New Mexico State University Museum: A History." University Museum, NMSU.
- Buck, Rebecca A. 2020. "3J Found in Collection." In *MRM6: Museum Registration Methods*, edited by John E. Simmons and Toni M. Kiser, 6th edition. Lanham Boulder New York London: Rowan & Littlefield.
- Camien, Laiten L. 1962. "A Glimpse into the Past: The Martin Amador House, Las Cruces, NM." *New Mexico Architecture* 4 (1): 8. <https://digitalrepository.unm.edu/cgi/viewcontent.cgi?article=1216&context=nma>.
- Johnston, Carly. 2023. "University Museum Ethnographic and Historic Collection IMLS Inventory." Master's thesis, Las Cruces, NM.
- Lash, Lou. 1962. "Colorful Chapter of History Closes." *Las Cruces Sun News*, August.
- Reynolds, Terry. 2020. "Names," February.